



Procedures

www.lakemacquarieairport.com.au

Email: contact@lakemacquarieairport.com.au

Phone: (02) 4944 9199

Operation Require Written Permission

GENERAL PROCEDURES

IMPORTANT

! - Rescue Helicopter Operations take precedence at all times.

! - Monitor CTAF for Skydive Ops - jumping overhead and landing on site.

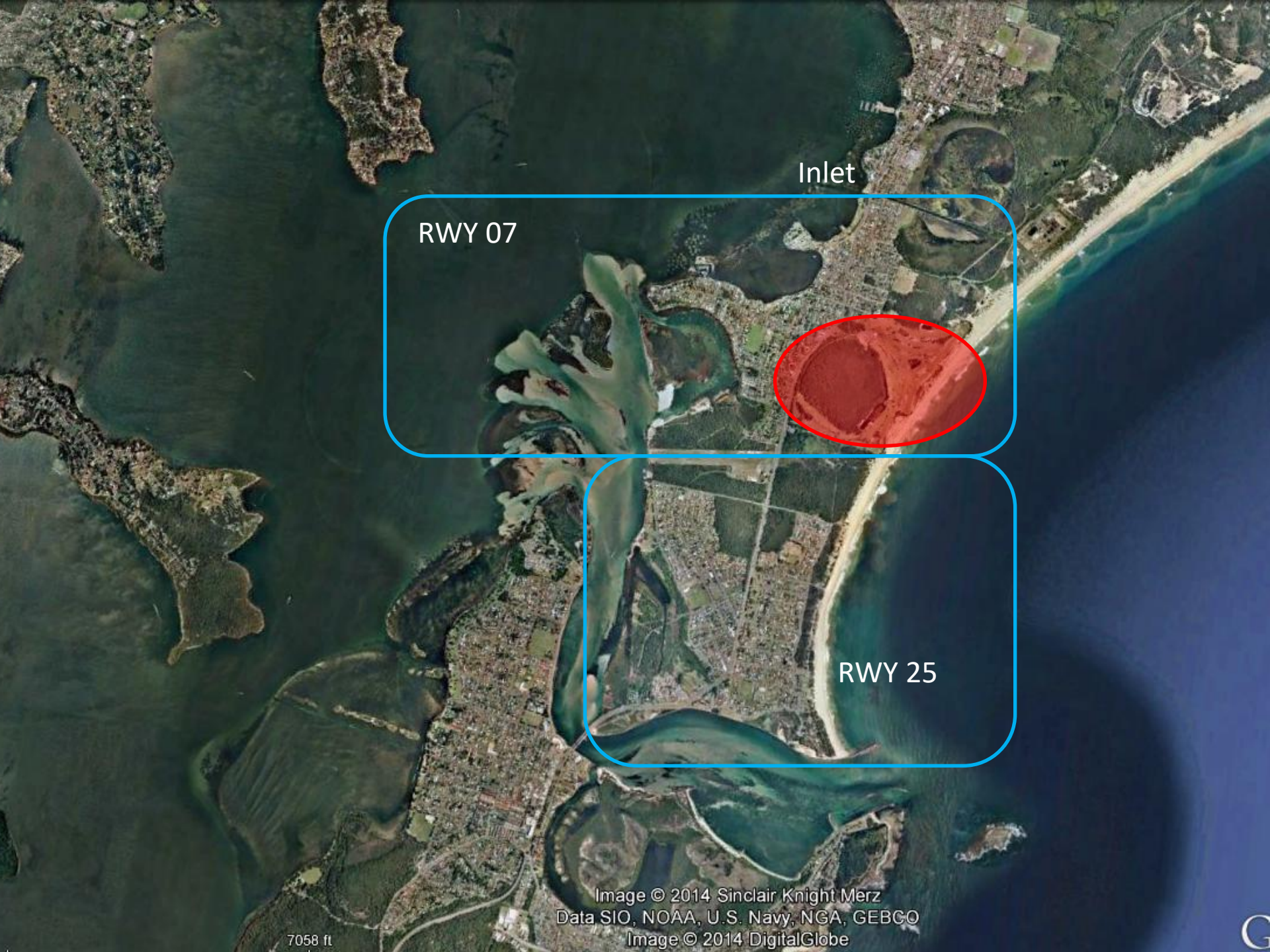
- Avoid all built up areas
- Avoid Golf Course to East
- No flight below 1000' AMSL
- Avoid overflight if possible
- Try to minimise noise as much as possible
- CTAF 132.1 "Lake Macquarie Airport"

AIRFIELD DATA

- Contact – (02)49 449 199 Emergency – 0408 449 198
- Email – contact@lakemacquarieairport.com.au
- Grass left and right 07/25 are part of the active runway and often in use
- The taxiway is on southern side of field when backtracking not available
- Rwy 07/25 – sealed, 11m wide
- TODA – 730m
- LDA – 670m Rwy 07, 670m Rwy 25
- CTAF – 132.1
- RunwayLighting not operational
- No fuel available

ARRIVALS

- All circuits left hand
- No touch and go's
- 1000' AMSL
- Avoid any built up areas
- Be aware of turbulence if crosswind due to trees
- Straight in approaches acceptable
- Go around early if in doubt due to poor over runs
- Be aware of sky dive ops possibly landing on Southern Tarmac area
- Trikes and Gyro's maybe operating on a tighter circuit
- Rwy 07 – Preferred runway
 - Avoid Golf Course
 - Fly Downwind to overfly inlet
 - Turn Base and Final over water
- Rwy 25
 - Fly Crosswind and Downwind along channel
 - Turn Base and Final over water



Inlet

RWY 07



RWY 25

7058 ft

Image © 2014 Sinclair Knight Merz
Data SIO, NOAA, U.S. Navy, NGA, GEBCO
Image © 2014 DigitalGlobe



DEPARTURES

- Gyro's may occupy runway for longer than normal due to building up rotor speed.
- Rwy 07
 - Back track available if not busy
 - Taxiway available on south side (unswept)
 - Run ups on turning bay just prior to takeoff
 - Depart along coast either direction
 - Do not overfly runway on departure
- Rwy 25
 - Run ups at hold facing North
 - Depart on Upwind, or Crosswind west of Swansea
 - Do not overfly runway on departure

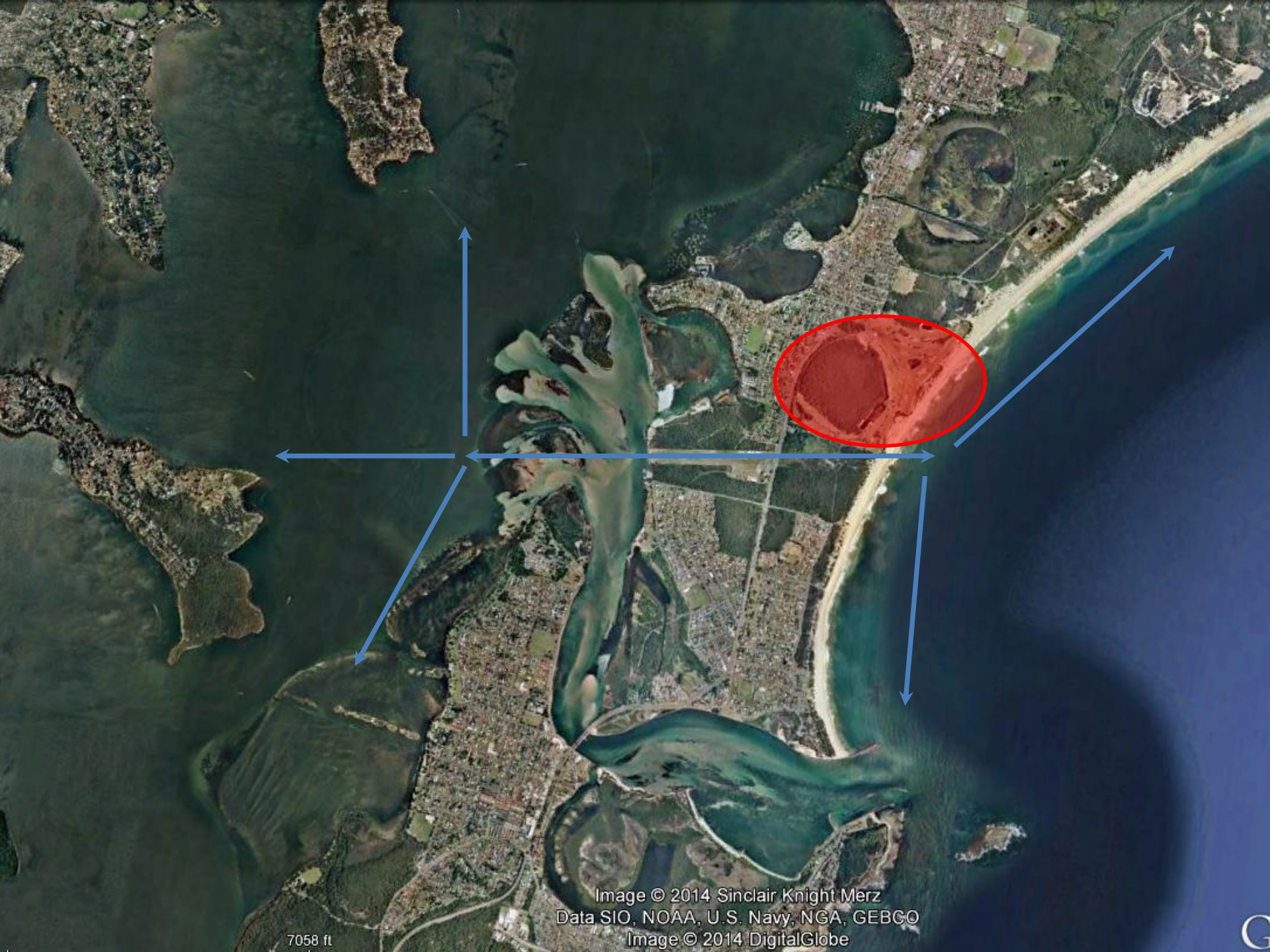


Image © 2014 Sinclair Knight Merz
Data SIO, NOAA, U.S. Navy, NGA, GEBCO
Image © 2014 DigitalGlobe

7058 ft

G

EMERGENCY PROCEDURES

Engine failure on landing

- If runway is guaranteed, continue approach
- If runway is marginal make an early decision for:
 - Rwy 07 – ditching in channel
 - Rwy 25 – beach
- A CRASH ON THE HIGHWAY WILL BE FATAL

Engine failure on takeoff

- Rwy 07 – ground loop if necessary to avoid road, otherwise straight ahead into scrub
- Rwy 25 – stop if you can, otherwise prepare for moisture in the cockpit